

Alcohol misuse is when using alcohol can cause problems. It can affect the community and cause:

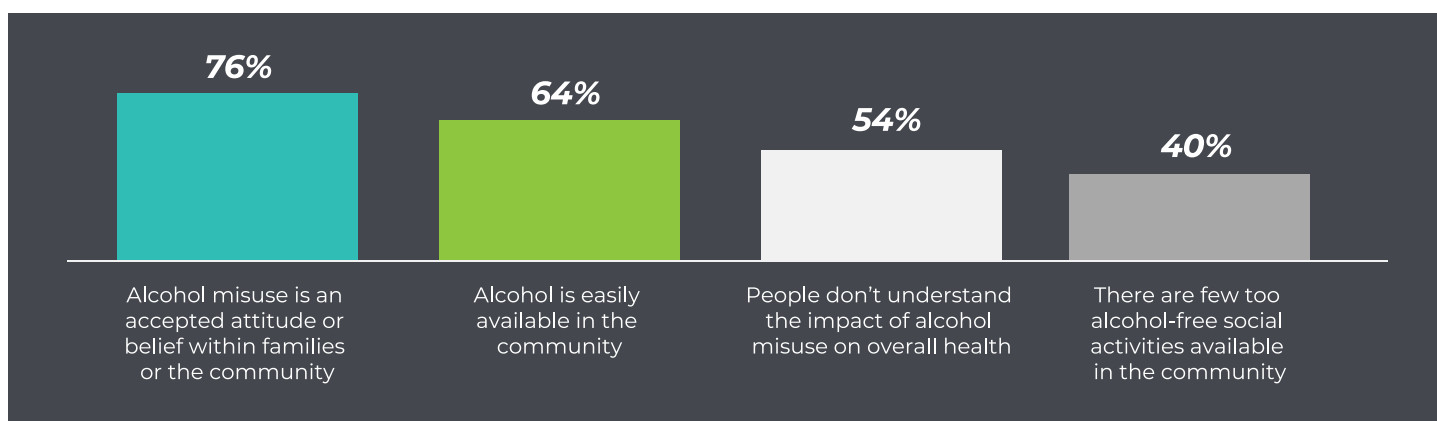
- Car Crashes
- Crimes and Violence
- Injuries or Death
- Alcohol Addiction and Dependence

Alcohol misuse is when:

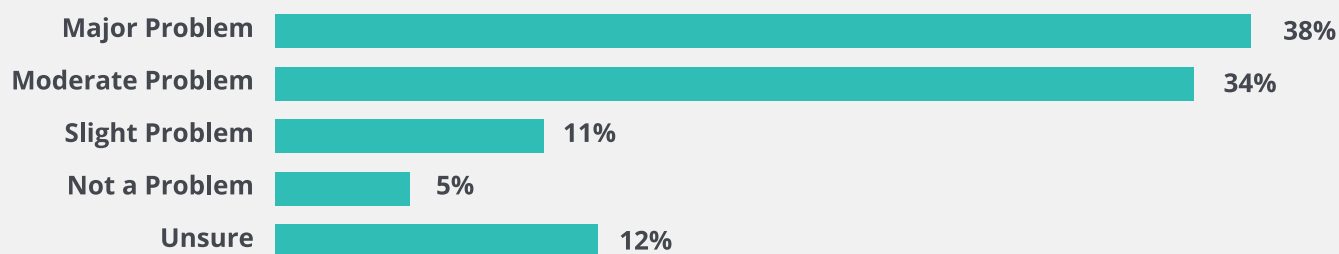
- People under 21 years old drink alcohol
- Any person binge drinks (4+ drinks a day for women, 5+ drinks a day for men)
- Pregnant women drink alcohol

WHAT PEOPLE SAID ON THE COMMUNITY HEALTH SURVEY

Why is Alcohol Misuse a problem in our county?



How serious is this health area in Eau Claire County?

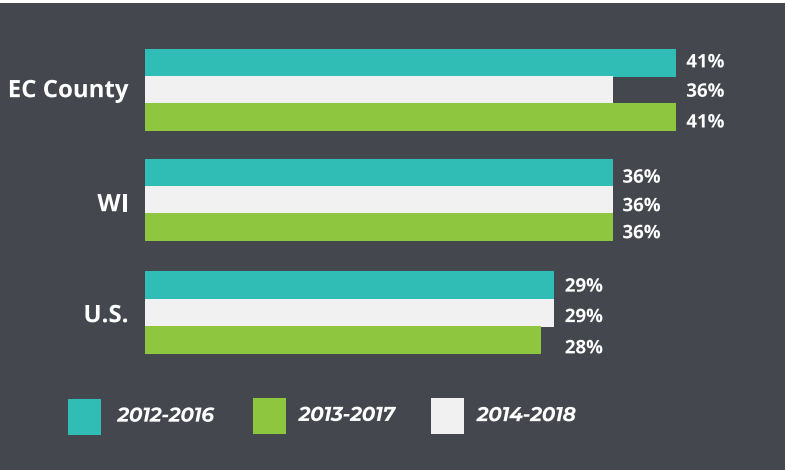


did you know?

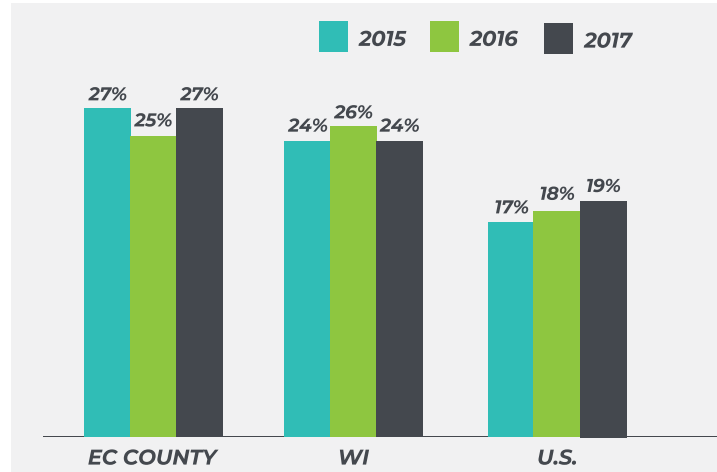
Binge Drinking - When women consume more than 4 alcoholic beverages or men consume more than 5 alcoholic beverages over about a 2-hour period of time.

Heavy Drinking - When women drink more than 1 alcoholic beverage per day on average or men consume more than 2 alcoholic beverages per day on average.

Percent of Motor Vehicle Deaths Involving Alcohol¹

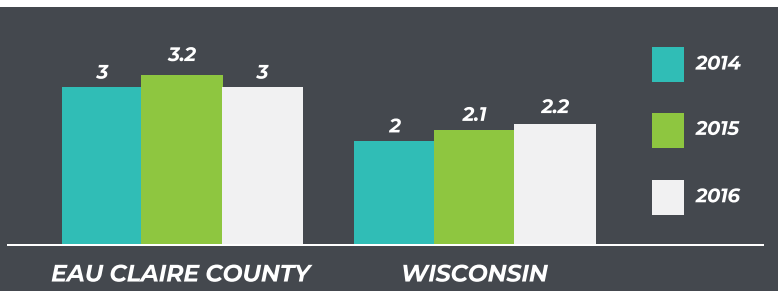


Percent of Adults Who Engage in Excessive Drinking (binge drinking or heavy drinking)²



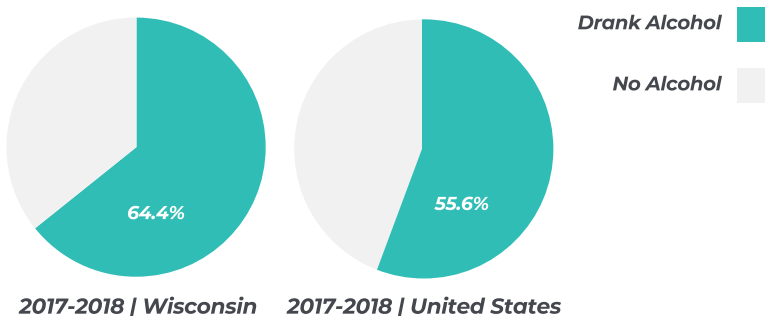
²County Health Rankings (Behavioral Risk Factor Surveillance System)

Alcohol-related Hospitalizations per 1,000 People³



³County Health Rankings (WI Public Health Profiles)

Percent of Adults (18+) Drinking Alcohol in the Past 30 Days⁴



⁴National Survey on Drug Use and Health

Percent of High School Students Drinking Alcohol in the Past 30 Days⁵

- 25%** Eau Claire County
- 30%** Wisconsin
- 29%** United States
- 6.3%** Healthy People 2030 target (for ages 12-17)

⁵Youth Risk Behavior Surveillance System (2019)